



CES Census 2025: Guidance for Users of the CES-SIMS Application in Wales

Uploaded 23rd October 2025 (v11)

Contents

Section 1: Timetable and Support Arrangements	4
CES Census website.....	4
Section 2: New in 2023.....	5
GDPR and the CES census.....	5
CES Census Website	5
Section 3: Preparation of SIMS	6
Checklist.....	6
Step 1: Ensuring all the data in the modules is up-to-date	7
Step 2: Lookup tables	7
Step 3: Pupils and staff with White Irish Ethnicity.....	10
Step 4: Setting up a folder in which to save the files, along with a security message	10
Section 4: Completing the Census	12
Checklist.....	12
Starting a new Census return	12
Box colours	13
Calculate All Details button.....	13
Recalculate buttons	13
Hover-over help information	14
Panel 1 – Census Details	14
Panel 2 – School Information.....	14
Panel 3 – Teaching staff qualifications	16
Teaching staff with CCRS.....	16
Teaching staff NPQH.....	16
Panel 4 – Leadership Group.....	17
Is acting head teacher a Catholic?.....	17
Current Leadership Team.....	17
Leadership vacancies.....	17
Panel 5 – Teaching staff ethnicity	17
Panel 6 – RE Teaching.....	18
Number of specialist RE qualified staff	18
Number of staff teaching RE	18
Number of staff with 50% timetabled RE	18
Panel 7 – Pupil ethnicity	18
Panel 8 – Pupil withdrawals.....	19
Panel 9 – Pupils FSM.....	19
Eligible for Free School Meals	19
Panel 10 – School uniform.....	19
No school uniform provision for other religions	19
Panel 11 – Headcount of staff religion	19
Section 5: Saving, Creating and Authorising.....	21
Saving the Census	21
Creating and Validating	22
Validation Errors Summary	22
Summary Report	23
Detail Reports.....	25
Authorising	25
What to do if an error is found after authorisation	26
Section 6: Uploading the Census.....	27
Appendix A: Diocesan Codes	28

Appendix B: Support Staff.....	28
Appendix C: National data collection: DfE and WG	29
Appendix D: Diocesan Representatives.....	30
Appendix E: CES Census 2023 Questions.....	31
Appendix F - Adding Missing Catholic Lookups for the CES Census.....	34
Appendix G: Matching the CES Census Lookups	35
Appendix H – Bulk Updates of Pupil Data.....	37

Section 1: Timetable and Support Arrangements

The CES Census starts on 21st January 2025 in Wales. Schools should complete and submit their returns during the telephone support period which runs from the start date until Friday 14th February.

For all support queries please raise a ticket on the online helpdesk at <http://cescensus.org.uk/helpdesk/>. We aim to respond to all support queries on the day they are raised. The online helpdesk also contains an extensive knowledgebase as well as up to date information about ongoing technical issues should any arise during the census.

During the support period schools can also telephone the helpdesk or the relevant diocesan representative:

- telephone: 020 7901 1909 (9:30 – 16:00 Monday to Friday)
- telephone or email diocesan census representatives, who are able to assist with common support questions (see appendix D)

If it will not be possible to complete your census before the end of the support period please contact the helpdesk as soon as a delay becomes inevitable. The CES will then work with the school to minimise the delay.

CES Census website

The CES Census website contains all the resources necessary to complete and upload the Census and is located at: <https://www.cescensus.org.uk>.

Section 2: New in 2025

There are no changes to the census questions.

GDPR and the CES census

The annual CES Census is the source of all school data collected by the CES. No data on individual pupils is collected in the census. The name of the headteacher is collected, also a contact name and email address which are used solely for census communications the following year.

A document that describes the extent to which the CES census falls within the General Data Protection Regulation (GDPR) can be downloaded on the CES website: <http://catholiceducation.org.uk/ces-census/gdpr-and-the-census>. This document addresses questions that the CES has received from schools that raised concerns about the CES census and privacy of schools' data.

CES Census Website

The CES Census website contains all the resources necessary to complete and upload the Census.

The website is located at: <https://www.cescensus.org.uk/>.

Section 3: Preparation of SIMS

Checklist

There are three checks that you need to make prior to completing your CES Census:

1. **Ensure data in SIMS modules is up-to-date.**
2. **Ensure look-up tables are in place and up to date.** Only required the first time.
3. **Set up a folder in which to save the files.** Only required the first time.

Step 1: Ensuring all the data in the modules is up-to-date

In addition to holding data required for the WG data collection exercises, SIMS software is capable of holding the data, such as staff and pupils' religion which is needed to complete most of the CES Census.

While it is possible to add some of the data (such as totals for staff religion) manually to the screens provided, it is more efficient to up-date the underlying data in the modules to avoid having to repeat the data entry each time the CES Census is undertaken. (Totals of pupils religion cannot be entered manually anywhere on the CES Census.)

It is therefore imperative that the fields needed for the CES Census are completed in the appropriate SIMS module in advance of completing the Census. This is then available for Census use for the future.

You should ensure that:

- All new pupils have been assigned a religion and an ethnicity
- All new members of staff have been assigned a religion and an ethnicity
- Free School Meals information is up to date
- Where the EMA application is in use that Education Maintenance Allowance information is up to date
- Any member of staff with a Catholic Certificate in Religious Studies has this or "CCRS" assigned as a qualification
- Any member of staff with a National Professional Qualification for Headship has this or "NPQH" assigned as a qualification
- In the case of maintained schools, ensure that only members of the leadership team i.e. executive head teacher; head teacher; deputy head teacher and assistant head teacher have been allocated to the leadership category in SIMS. Independent schools and colleges may choose to assign holders of equivalent roles (eg members of the senior management team) to the CES Leadership Team category.
- In the case of support staff, ensure that members of staff carrying out roles listed in Appendix B have been assigned those roles in SIMS.

Bulk Update can be used for entry of religion and ethnicity to several pupils simultaneously. See Appendix H for further information.

Step 2: Lookup tables

The Catholic religion is not a default lookup in SIMS. It may have different values, eg Catholic or Roman Catholic. Therefore, the census application needs to be told explicitly which lookup to assign as Catholic for both pupils and staff.

If you have used SIMS CES Census before then the Catholic lookup will be set up and linked to the CES Census. You can now move on to "Step 3: setting up a folder in which to save files".

If you have not used SIMS CES Census before then the 2023 SIMS upgrade should have installed any missing categories for you and linked them automatically to the CES Census.

You should, however, check that the update has set up your lookups correctly. Therefore, the first time you run the CES Census using SIMS you will need to follow these two steps:

1. Check SIMS Lookups

Appendix G contains greater detail and screenshots for this step.

Follow the Tools | Lookups | Maintain route and check the three lookups:

In Description, type *ethnicity* and in Data Area type *Staff*. Click *Search*, highlight the resulting 'Ethnicity – Staff' field and click *Open*. Scroll down the list of values and check whether 'Traveller of Irish / Gypsy / Roma Heritage' is present.

In Description, type *Religion* and in Data Area type *Staff*. Click *Search*, highlight the resulting 'Religion – Staff' field and click *Open*. Scroll down the list of values and check whether 'Roman Catholic' or 'Catholic' is present.

In Description, type *Home Religion* and in Data Area type *Student*. Click *Search*, highlight the resulting 'Home Religion – Student' field and click *Open*. Scroll down the list of values and check whether 'Roman Catholic' or 'Catholic' is present.

If any of the above values are missing, see Appendix G for detailed instructions on how to add them.

You should only need to perform this step the first time you run the SIMS CES Census application.

2. Check CES Census Lookups

Appendix H contains greater detail and screenshots for this step.

Follow the Tools | Statutory Return Tools | Update CES Census Lookups route.

The SIMS lookups will appear in the drop down menu at the right hand side of each category for which they refer (see below).

SIMS .net: YSGOL WATERS EDGE

Focus Reports Routines Tools Window Help

Back Forward

Update CES Census Lookups

Save Undo Links Help Close

1 Staff Related Lookups 2 Pupil Related Lookups

1 Staff Related Lookups

Catholic Religion

Staff with White Irish Ethnicity

Title	Surname
Miss	Bates

Christian - Catholic

Christian - Catholic

Christian - Methodist

Christian - Presbyterian

Hindu

Jewish - Other

Jewish - Conservative

Jewish - Orthodox

Jewish - Reform

Muslim - Other

Muslim - Shia

Muslim - Sunni

No Religion

Other Religion

Refused

Shinto

Sikh

New

Delete

If either the pupil or the staff drop down menu does not have a value selected, then it has not been matched to the CES Census. In this case, go to appendix G for detailed instructions on how to complete the process. The screen below shows a set of matched CES lookups.

Update CES Census Lookups

Save Undo Links Help Close

1 Staff Related Lookups 2 Pupil Related Lookups

1 Staff Related Lookups

Catholic Religion

Staff with White Irish Ethnicity

Title	Surname	Forename	Gender	Staff Code
Miss	Bates	Belinda	Female	BEB

New

Delete

2 Pupil Related Lookups

Catholic Religion

Pupils with White Irish Ethnicity

Surname	Forename	Yr	Reg	Adno
Adams	Nancy	3	3TO	001457

New

Delete

Step 3: Pupils and staff with White Irish Ethnicity

Follow the Tools | Statutory Return Tools | Update CES Census Lookups route.

In Wales the pupil category *White Irish Ethnicity* is not used, so schools will have to add their own code.

To do this, click on the icon with the label *New* and a *Find Student* window appears (see below). Enter a student name in the text boxes and click on *Search*. Click on *Ok* to select the student. Repeat this process for all white Irish students and staff.

Surname	Forename	Yr	Reg	Adno
Abbess	Graham	7	7A	004562
Abbey	Grenetta	10	10F	003924
Abbey	Jimmy	12	G	003603
Abbey	Sean	7	7B	004563
Abbot	Andrew	9	9E	004163
Abbot	Benjamin	10	10A	004161
Abbot	Claire	13	J	003437
Abbot	Hannah	11	11B	003764
Abbot	Susan	12	H	003604
Able	Cameron	9	9B	004164
Abrahams	Jacqui	10	10B	003925
Ackrington	Robert	9	9C	004165
Ackton	Stanley	8	8A	004342
Ackton	William	10	10A	003926
Acton	Samantha	7	7C	004503
Adams	Melanie	11	11D	003765
Adedeji	Payal	9	9D	004166
Adkins	Richard	11	11E	003766
Adrianson	Robert	8	8B	004343

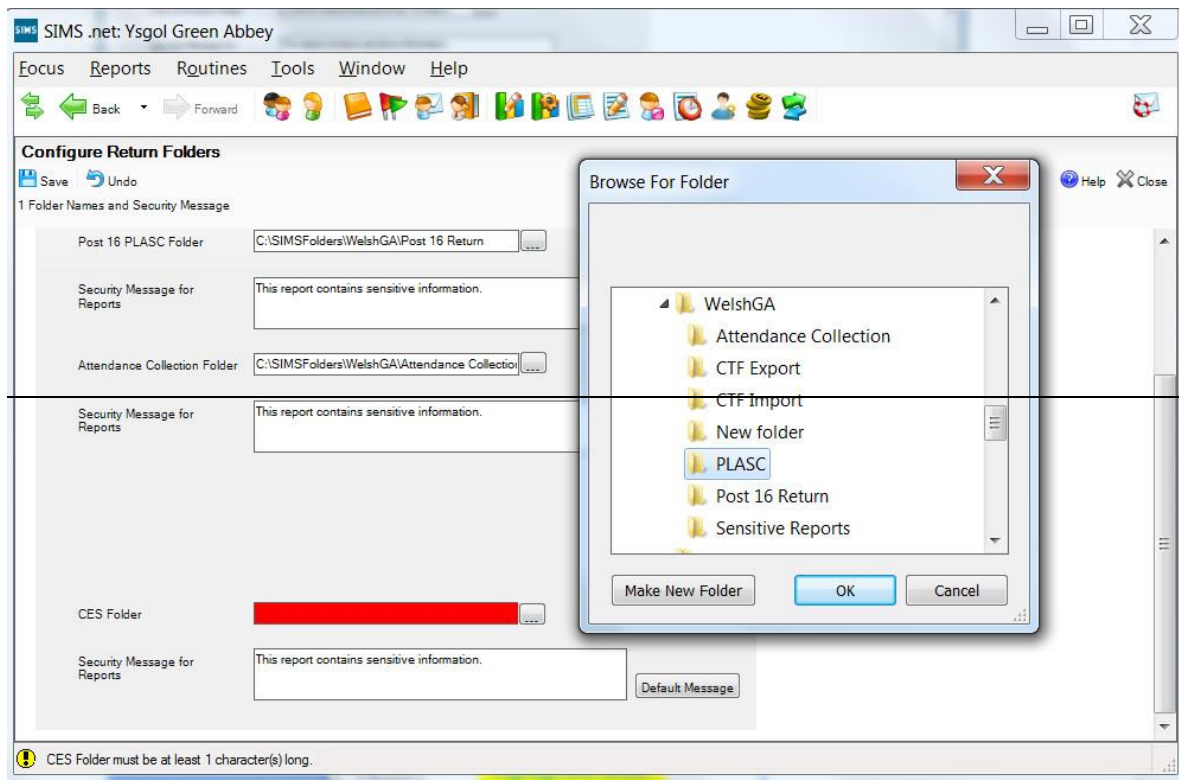
Once these additions to the look-ups have been made, they will be available when completing the CES Census in future (unless SIMS is required by DCSF or WG to make changes to the categories). Unfortunately for the present, if new pupils in this category join the school, it will be necessary to enter this information manually.

Step 4: Setting up a folder in which to save the files, along with a security message

Before completing the Census, identify a folder in which the completed CES Census file can be saved.

In the case of schools in Wales, the location for storing the files is selected by using the route:

Tools | Statutory Return Tools | Folder Names and Security Message



The box highlighted in red shows where the location of the CES Census Return folder should be recorded. By clicking on the three dots at the right of the box a drop down- list is revealed.

It is good practice to put a security message on files containing data so that it will be displayed on the final report in hard and electronic versions. A default message (*This detailed report contains sensitive information.*) is shown in the screenshot above and can be retained without doing anything. In order to change the security message, click on the *Security Message* box and type in the chosen message. The file name will be generated automatically at this location.

Section 4: Completing the Census

Checklist

To complete the Census follow these steps (further details in this section and section 6):

1. Create a new CES Census
2. Complete missing information in panel 2 (school information)
3. Press 'Calculate all details' button to populate remaining panels

In panels 3 to 11:

4. Complete answers not calculated by SIMS
5. Check answers that SIMS has calculated and correct if necessary
6. Save the Census
7. Create and validate
8. Check the summary report
9. When signed off by the head, authorise the Census

The CES Census comprises eleven panels:

1. Census Details
2. School Information
3. Teaching Staff Qualification
4. Leadership Group
5. Teaching Staff Ethnicity
6. RE Teaching
7. Pupil Ethnicity
8. Pupil Withdrawals
9. Pupils FSM
10. School Uniform
11. Headcount of Staff Religion

There is no restriction on the number of Census returns that can be completed, although only one may be submitted. CAPITA strongly suggest doing a 'dry run' before completing the final return. This enables errors and omissions in the set up procedure to be identified and corrected in advance of the Census date.

Starting a new Census return

To start completing the return, follow the route:

[Routines](#) | [Statutory Returns](#) | [Schools CES Census](#)

This will bring up the start screen for completing the return. Clicking the **New** button on the top left hand side of the screen will start a new Census return file.

Box colours

The boxes will be coloured bright yellow if the data is generated from SIMS. If the user edits the data then the box containing the edited data will change to pale yellow (as shown below).

3 Teaching Staff Qualification

Teaching Staff With CCRS 2

Teaching Staff NPQH	Count
Catholic male teaching staff with qualification	1
Other male teaching staff with qualification	0
Catholic female teaching staff with qualification	0
Other female teaching staff with qualification	1
Catholic male teaching staff undertaking qualification	0
Other male teaching staff undertaking qualification	0
Catholic female teaching staff undertaking qualification	0
Total staff	2

Recalculate

If an answer is not generated by SIMS (eg staff undertaking the NPQH qualification) then the box will be white and once the user has edited the box, it will go pale yellow.

Calculate All Details button

On Panel 2 (School Information – see below) there is a **Calculate All Details** button. When the user clicks on this button, all the data that is generated from SIMS populates the relevant panels. If it is not already in the SIMS database, type the information into each of the blank spaces.

If the *Calculate all Details* button is selected after any editing has taken place then this will recalculate all panels and any editing will be lost.

Recalculate buttons

The **Recalculate** buttons are on each panel where data is generated from SIMS.

The user can make amendments to the data obtained from SIMS. If the user edits the information, then the box will go pale yellow as already described above. If a box changes to red, this indicates that there is a conflict between the information already collected from SIMS and the information which is being added. It will not be possible to do anything further until the error has been corrected. The section at the bottom left of the screen will indicate the nature of the error.

If the user decides the information he or she has added is incorrect, then it can be removed by clicking the **Recalculate** button. The necessary information can be added to a field at this stage, but it will only transfer to the CES Census. It will not update the information held in the SIMS system. Therefore, it is advisable to add the information into the SIMS system in the appropriate area (eg adding staff information on qualifications in the Personnel module).

Hover-over help information

Several boxes will display help information when the mouse is moved over the box, as illustrated below.

3 Teaching Staff Qualification

Teaching Staff With CCRS

Teaching Staff NPQH	
Catholic male teaching staff with qualification	1
Other male teaching staff with qualification	0
Catholic female teaching staff with qualification	0
Other female teaching staff with qualification	1
Catholic male teaching staff undertaking qualification	0
Other male teaching staff undertaking qualification	0
Catholic female teaching staff undertaking qualification	0
Total staff	2

1. Catholic Certificate in Religious Studies.
2. Headcount: Number of individuals whether full or part time.

Recalculate

More substantial help information will remain displayed until the mouse pointer is moved. It is also possible to change the font size. See below:

3 Teaching Staff Qualification

Teaching Staff With CCRS

Teaching Staff NPQH	Count
Catholic male teaching staff with qualification	
Other male teaching staff with qualification	
Catholic female teaching staff with qualification	
Other female teaching staff with qualification	
Catholic male teaching staff undertaking qualification	
Other male teaching staff undertaking qualification	
Catholic female teaching staff undertaking qualification	
Other female teaching staff undertaking qualification	
Total staff	2

Help

1. National Professional Qualification for headship.
2. Headcount: Number of individuals whether full or part time.
3. In this context 'Other' means of other faiths or none.

1 of 1

Panel 1 – Census Details

To move to the first section, click on **1 Census Details** near the top of the screen. This will move the cursor into the first section (as shown in the screen below). The reference date will be automatically set and cannot be changed. A default description has been provided, but this can be updated as necessary to permit more than one return to be attempted, e.g. *Dry Run*.

Panel 2 – School Information

To move to the next panel click on the label **2 School information** at the top of the screen, or scroll down and position the cursor in the box *Contact Title*. (The previous boxes in this panel will be completed automatically and cannot be changed).

1 Census Details

Reference Date: 20/01/2022

Description: CES Return 2022

2 School Information

School Name: Green Abbey School

LA Number: 825 Establishment Number: 4321

School Address: Main Office, Monksmoor Road, Bedford, Bedfordshire, MK2 5AP

Telephone Number: 851234 Unique Reference Number: 137247

Head Teacher: Adrian Becker

School Website:

School Email: office@ga.org.uk

School Phase: Secondary

School Governance: Community

Gender on entry to school: Both

Gender on entry to 6th form: Both

School Detail

Check the School Details in the School Information panel and use the 'School Detail' button to correct if necessary. Note that County is displayed in the address details but is no longer used by the Census.

Check the other information in the School Information panel and update as necessary – items shown in bright yellow have been obtained from SIMS but may be edited.

When you select your diocesan code please double check that you have not selected the value above or below by mistake.

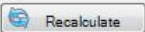
When this panel has been completed click the “Calculate All Details” button to obtain information for the remaining panels.

Panel 3 – Teaching staff qualifications

3 Teaching Staff Qualification

Teaching Staff With CCRS

Teaching Staff NPQH	Count
▶ Catholic male teaching staff with qualification	1
Other male teaching staff with qualification	0
Catholic female teaching staff with qualification	0
Other female teaching staff with qualification	1
Catholic male teaching staff undertaking qualification	0
Other male teaching staff undertaking qualification	0
Catholic female teaching staff undertaking qualification	0
Total staff	2



Teaching staff with CCRS

This is a headcount of all staff with the CCRS qualification (Catholic Certificate in Religious Studies). The figure is calculated automatically by SIMS from the staff professional qualifications details. If 'CCRS' is entered as the name of the qualification it will be counted by the Census.

One other qualification is equivalent to CCRS and may also be included:

CTC: Catholic Teachers' Certificate

This qualification is not counted automatically by SIMS. The panel will need to be amended manually if any staff hold the CTC.

Teaching staff NPQH

This is a headcount of staff with the NPQH qualification (National Professional Qualification for Headship). Unlike the CCRS headcount, this one is broken down by gender and Catholicity. The figures are calculated automatically by SIMS from the staff professional qualifications details. If 'NPQH' is entered as the name of the qualification it will be counted by the Census.

The four headcounts of staff undertaking the NPQH qualification are not calculated by SIMS and must therefore be entered manually.

Panel 4 – Leadership Group

4 Leadership Group

Is Acting Head Teacher a Catholic: Not Applicable

Current Leadership Team

Name	Role	Gender	Ethnicity
Anderson Mary	Assistant Head Teacher	Female	White British
Blacker Adrian	Head Teacher1	Male	White British
Dumbell Steven	Deputy Head Teacher	Male	White Irish
Hatchett Ruth	Deputy Head Teacher	Female	White Irish

New Delete

Leadership Vacancies

Role	Term
Head Teacher1	2

New Delete

Recalculate

Questions in this section relate to the following leadership team roles: head teacher; executive head teacher; deputy head teacher; assistant head teacher.

Is acting head teacher a Catholic?

This question should be answered **only** if there is currently an acting head teacher in the school, otherwise it should be left as 'Not Applicable'.

Current Leadership Team

The leadership team is derived by SIMS. If a member of the team is missing they can be added by clicking on the 'New' button, selecting them from the staff details and assigning the correct role.

Leadership vacancies

Vacancies in the leadership team must be added manually. Under 'Term' enter the number of school terms that the vacancy has been.

Panel 5 – Teaching staff ethnicity

5 Teaching Staff Ethnicity

Total Teaching Staff: 61

Ethnicity	Count
White British	44
White Irish	6
White Other	4
Traveller of Irish/Gypsy/Roma heritage	0
Mixed/Dual Background	1
Asian/Asian British	3
Black/Black British	2
Chinese	1
Other Ethnic Group	0
Not Known	0
Total	61

Recalculate

This panel is calculated by SIMS. If any figures are incorrect it is advisable to make corrections to the staff details themselves rather than simply correcting the Census totals. If staff details are amended the census totals will be updated by pressing the 'Recalculate' button.

Panel 6 – RE Teaching

This panel is not calculated by SIMS and must be entered manually.

Number of specialist RE qualified staff

The number of specialist qualified Religious Education (RE) teachers whose first degree comprised the study of RE in whole or in part.

Number of staff teaching RE

The number of staff whose teaching timetable comprises some RE teaching.

Number of staff with 50% timetabled RE

The number of staff whose teaching timetable comprises at least 50% of RE teaching.


Panel 7 – Pupil ethnicity

Ethnicity	Count
White British	716
White Irish	23
White Other	87
Traveller of Irish/Gypsy/Roma heritage	3
Mixed/Dual Background	28
Asian/Asian British	63
Black/Black British	42
Chinese	13
Other Ethnic Group	31
Not Known	10
Total	1016

This panel is calculated by SIMS. If any figures are incorrect it is advisable to make corrections to the student details themselves rather than simply correcting the Census totals. If student details are amended the census totals will be updated by pressing the 'Recalculate' button.

Important note: When updating pupil ethnicity ensure that the effective date of the change is set to a date **before** the census date, preferably the date that the pupil started at the school. If the effective date is left as a date after the census date the change will not be detected when the 'Recalculate' button is pressed.

Panel 8 – Pupil withdrawals



This panel is not calculated by SIMS and must be entered manually.

SRE: Sex and relationship education.

Panel 9 – Pupils FSM

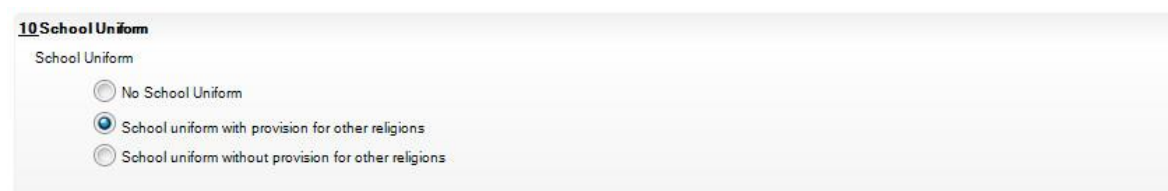


This panel is calculated by SIMS.

Eligible for Free School Meals

The number of pupils eligible for a free school meal on the census day.

Panel 10 – School uniform

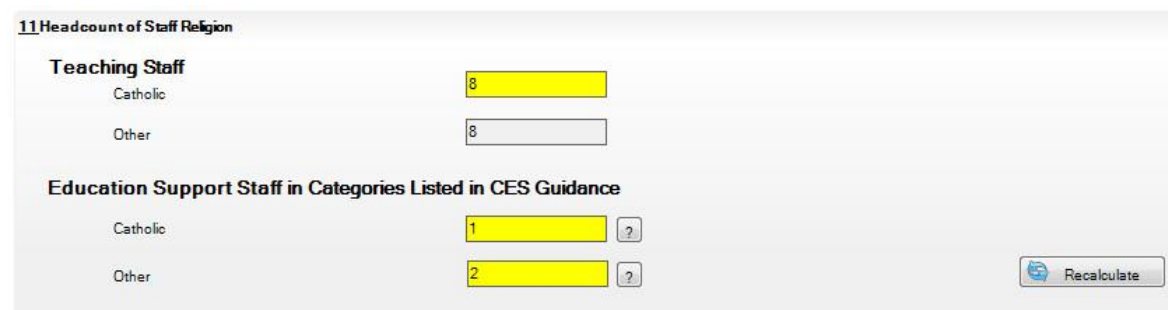


This panel is not calculated by SIMS and must be entered manually.

No school uniform provision for other religions

This answer does not necessarily imply that a school has explicitly made no allowance for other religions in its school uniform policy. It may be applicable where a school has no pupils from other religions.

Panel 11 – Headcount of staff religion



This panel is calculated by SIMS but can be amended.

Help buttons are available for the two support staff figures. When pressed, these display a list of all the relevant support staff categories.

The following staff are excluded from the totals:

- teachers on extended (one or more terms) paid or unpaid leave
- supply staff in post for less than a term.

Always ensure that there are the correct figures for Catholic and non-Catholic staff. If the figures for Catholic staff and support staff are shown as zero then the staff lookups may not have been set up correctly (see appendix G).

Section 5: Saving, Creating and Authorising

Saving the Census

Changes to the census are saved in the SIMS database by pressing the 'Save' icon at the top left of the panel (see below). The Census should be saved regularly to prevent loss of data.

The screenshot shows the SIMS .net: Green Abbey School interface. The main window is titled 'CES Return Browser [Fileset ID: 800 (SIMS.net)]'. The 'CES Return Details - New Return' panel is open, displaying various fields for school information. A yellow callout box points to the 'Save' icon in the top left of the panel, with the text 'Click Save to store the information entered in the panels'.

Form Fields:

- Description: [Empty text box]
- School Name: [Empty text box]
- LA Number: [Empty text box]
- School Address: [Text area containing 'Monkmoor Road', 'Bedford', 'Bedfordshire', 'SI2 5AP']
- Establishment Number: 4321
- Telephone Number: 851234
- Head Teacher: Adrian Blacker
- School Website: [Empty text box]
- School Phase: Secondary (dropdown menu)
- Gender on entry to school: Both (dropdown menu)
- Unique Reference Number: 012345
- School Email: office@ga.org.uk
- School Governance: Community (dropdown menu)
- Gender on entry to 6th form: Both (dropdown menu)

Buttons:

- Save (top left of panel)
- Undo
- Create & Validate
- Authorise
- Summary Report
- Detail Reports
- Help
- Close
- School Detail (bottom right)

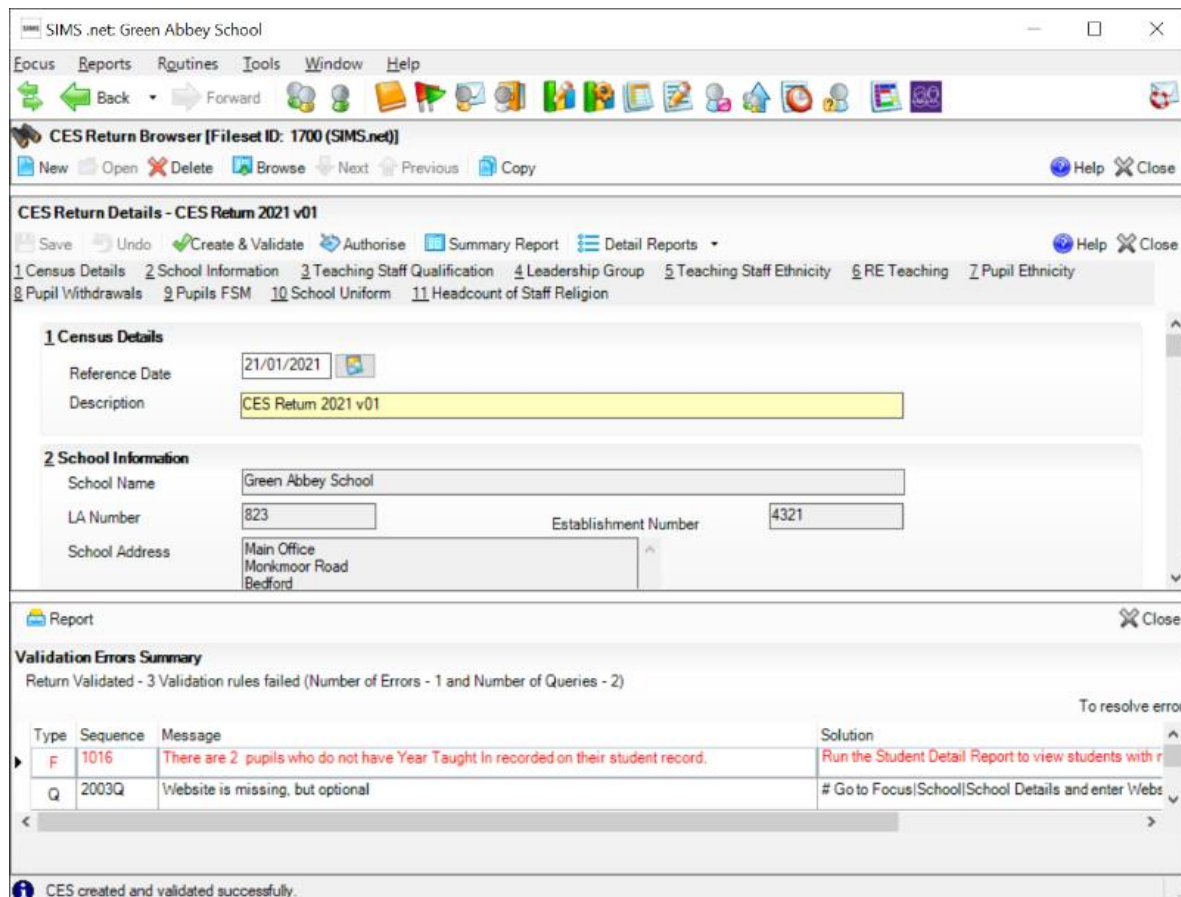
Creating and Validating

When all the panels are complete, press the 'Create and Validate' icon to check for errors and create summary and detail reports.

Important note: any further changes to the panels must be saved before pressing 'create and validate' again.

Validation Errors Summary

If any errors or warnings are found they are displayed at the bottom of the screen.



SIMS .net: Green Abbey School

Focus Reports Routines Tools Window Help

CES Return Browser [Fileset ID: 1700 (SIMS.net)]

New Open Delete Browse Next Previous Copy Help Close

CES Return Details - CES Return 2021 v01

Save Undo Create & Validate Authorise Summary Report Detail Reports Help Close

1 Census Details 2 School Information 3 Teaching Staff Qualification 4 Leadership Group 5 Teaching Staff Ethnicity 6 RE Teaching 7 Pupil Ethnicity
8 Pupil Withdrawals 9 Pupils FSM 10 School Uniform 11 Headcount of Staff Religion

1 Census Details

Reference Date: 21/01/2021
Description: CES Return 2021 v01

2 School Information

School Name: Green Abbey School
LA Number: 823 Establishment Number: 4321
School Address: Main Office, Monkmoor Road, Bedford

Report Close

Validation Errors Summary

Return Validated - 3 Validation rules failed (Number of Errors - 1 and Number of Queries - 2)

Type	Sequence	Message	Solution
F	1016	There are 2 pupils who do not have Year Taught In recorded on their student record.	Run the Student Detail Report to view students with r
Q	2003Q	Website is missing, but optional	# Go to Focus School School Details and enter Webs

CES created and validated successfully.

Summary Report

Once the *Create & Validate* button has been selected, the user clicks the *summary report* button to check the details before authorising.

The report includes some rudimentary validation

CES Census 2022

Security Message : This report contains sensitive information.

Filename: 8234321_CES_8230X22_002.UNA Report Created Date: 02-12-2021 10:40:26
Fileset Number: 2001
Only Single Reg and Dual Main pupils are included in the return

A. Survey Reference Date	
1. Date for data used	20-01-2022
B. School/College Characteristics	
2. Name of school/college	Green Abbe School
3. Address 1	Main Office
4. Address 2 *	Monkmoor Road
5. Town	Bedford
6. Postcode	SG2 5AP
7. Telephone number (including dialling code)	051234
8. Contact name including title	Mr Fred Smith
9. (a) Contact email	fsmith@greenabbey.sch.uk
(b) School/College email	office@gps.uk
10. Website *	-- Missing, but Optional --
11. Head Teacher/Principal (including title)	Mr Adrian Blacker
12. Diocesan code	NOR
13. Establishment number	4321
14. Local Authority	823
15. Unique Reference Number (URN)	137247
16. Governance	Community
17. Phase	Secondary
18. Gender of entry	Both
19. Gender of sixth form	Both

The report includes the following features:

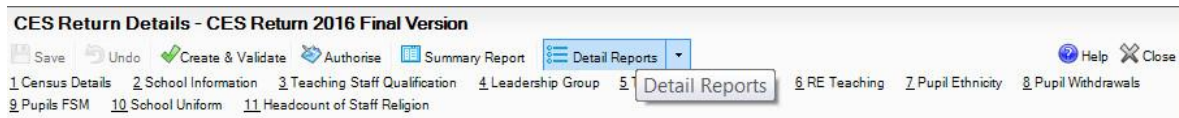
- Totals of pupils by gender and Catholicity (see screen below)
- Warning messages when zero or less than 25% Catholic pupils
- Warning message when zero Catholic teachers or support staff

E. Number and Characteristics of Pupils on Roll								
	Catholic Boys		Catholic Girls		Other Boys		Other Girls	
Y14	52.	0	53.	0	54.	0	55.	0
Y13	56.	32	57.	43	58.	10	59.	4
Y12	60.	27	61.	34	62.	11	63.	8
Y11	64.	58	65.	81	66.	13	67.	9
Y10	68.	63	69.	55	70.	12	71.	29
Y9	72.	75	73.	66	74.	5	75.	14
Y8	76.	67	77.	59	78.	17	79.	16
Y7	80.	63	81.	61	82.	16	83.	19
Y6	84.	0	85.	0	86.	0	87.	0
Y5	88.	0	89.	0	90.	0	91.	0
Y4	92.	0	93.	0	94.	0	95.	0
Y3	96.	0	97.	0	98.	0	99.	0
Y2	100.	0	101.	0	102.	0	103.	0
Y1	104.	0	105.	0	106.	0	107.	0
R	108.	0	109.	0	110.	0	111.	0
N and below	112.	0	113.	0	114.	0	115.	0
Other	116.	0	117.	0	118.	0	119.	0
Total	Total Boys: 385		Total Girls: 399		Total Boys: 64		Total Girls: 99	
	Total Catholic Children: 784				Total Other Children: 183			
					Of which there are:			
					120	Christian - Other	5	
					121	Buddhist	18	
					122	Hindu	21	
					123	Jewish	14	
					124	Muslim	30	
					125	Sikh	6	
					126	Other	3	
					127	None	1	
					128	Refused	1	
					129	Missing	0	

Detail Reports

If it is necessary to clarify staff or pupil data there are two detail reports that show all the data used in the Census at individual student and staff level.

These reports can be used to check figures that do not appear to correspond with school records. For example, pupil numbers by year group and catholicity sometimes show discrepancies which can now be resolved using the student report.



Click on the 'Detail Reports' icon (see above) and select either the student or staff detail report.

The student report contains the following information for every student included in the Census:


- Surname
- Forename
- Gender
- Year group
- Ethnicity
- Religion
- In care (yes/no)
- FSM (yes/no)
- SEN without statement (yes/no)
- SEN with statement (yes/no)

The staff report contains the following information for every member of staff included in the Census:

- Surname
- Forename
- Post
- Religion
- Ethnicity
- Staff with CCRS
- Staff with NPQH

Authorising

When all checking has been completed to the satisfaction of the headteacher, the return is

authorised by clicking the authorise icon  Authorise at the top of the screen. The return cannot be edited after this stage. Clicking the "authorise" icon will save the Census in xml and html formats. The xml file is sent via the Census website to the CES. (The xml file is created from the una file at the point when the return is authorised.)

If an error is subsequently found in the data after authorisation, a new return should be created (see next sub-section).

Once the return has been completed and no further editing is needed the SIMS CES Census routine can be closed by pressing the *Close* button at the top right of the screen.

The process for transmitting the saved files to CES is covered in Section 6.

What to do if an error is found after authorisation

If an error is found in the data after authorisation, a new return should be created. However, **there is no need to create a brand new Census return**. If it is necessary to amend data, follow these steps:

1. Go to Routines | Statutory Returns | Schools CES Census
2. Click on 'Browse' at the top of the screen. A list of all the previous Census returns is displayed.
3. Highlight the current Census and click on 'Copy' at the top of the screen
4. A copy of the Census will be created, containing all the current data.
5. Correct the errors and then follow the previous steps to save, create & validate and authorise the return

Section 6: Uploading the Census

To submit your census file go to <https://www.cescensus.org.uk/upload> and upload the file using the online form.

You will be prompted for the user id and password. These are sent by email in the December preceding the Census. If you have not received this, please contact your diocesan representative, or the CES (census@catholiceducation.org.uk).

When you have logged in follow these steps:

- Select your diocese from the drop-down list
- Enter the email address to which a receipt confirmation should be sent
- Select the file to be uploaded
- Enter any additional information in the 'Comments' box.
- Click on the 'Upload Now' button

If your file upload is successful you will see a message on the screen and you will receive a confirmation email.

If your file upload is unsuccessful the reason for the failure will be displayed on the screen. The most likely reason will be that you have not entered all the necessary information on the form. Another reason may be that you have attempted to upload the wrong file.

If the file upload is unsuccessful you should attempt the upload again. If the problem persists please contact the CES Helpdesk at census@catholiceducation.org.uk.

Catholic Education Service **CES Census 2025**
File Upload

Home **Upload** SIMS EXCEL Support Return Rates

SIMS Users
Upload your XML file. To locate the file in SIMS, go to: Routines|Statutory Returns|Schools CES Census
Look for 'CES Census Folder' at the top of the screen.
[Click here for diagram](#)

Excel Users
Upload your Excel form after checking the validation tab for errors.
Rename your file before uploading.
[More information](#)

Upload Census File

Diocese: Select Diocese ?

Email: (for confirmation) ?

File: Choose File No file chosen ?

Comments: Any extra information ?

UPLOAD NOW ?

Appendix A: Diocesan Codes

Diocesan code	Diocese
CAR	Cardiff
MEN	Menevia
WRE	Wrexham

Appendix B: Support Staff

Education Support Staff	
England	
HL QA UA SN TA	Higher Level Teaching Assistant Teaching Assistants with Diploma in Childcare and Education (previously NNEB) or equivalent Teaching Assistants without Diploma in Childcare and Education (previously NNEB) or equivalent Special Needs Support Staff Teaching assistants
Special Schools Support Staff	
CQ CU	Qualified child care staff Unqualified child care staff
Minority Ethnic Pupils Support Staff	
EB EO	Bilingual Assistants Others
Other Education Support Staff	
ME LI SS TE IT	Matrons/Nurses/Medical Staff Librarians Others (including welfare assistants in the classroom, learning mentors (employed at school), study supervisors, cover supervisors, any other support staff regularly employed at the school (not covered in teaching assistants) Technicians IT Technicians
Wales	
SN ME TA HL TE PS LI	Special Needs Support Staff Matrons/Nurses/Medical Staff (including NHS employees) Teaching Assistants (TAs) Higher Level Teaching Assistants (HLTAs) Laboratory or workshop technicians Pastoral Support Staff Librarians and Library Assistants

Appendix C: National data collection: DfE and WG

In order to reduce the burdens on schools and to ensure comparability of data, where relevant, questions have been revised to align with information sought by DfE and the Welsh Assembly. Similarly, definitions used by these organisations are applicable, as appropriate, to the CES Census (e.g. definitions of full-time and part-time). For ease of reference, links to DfE and Welsh Assembly guidance are provided below.

The DfE link is:

<http://www.education.gov.uk/schools/adminandfinance/schooladmin/ims>

The WG link is:

<http://wales.gov.uk/topics/educationandskills/schoolhome/schooldata/ims/datacollections/pupillevelannualschoolcensus/?jsessionid=pGHJM17f615gxTKLJqP2vBqMbY7plmqR7DTZ8TQfNR4k2mJy2Kvk!741275934?lang=en>

Appendix D: Diocesan Representatives

<i>Diocese</i>	<i>Contact</i>	<i>Title</i>
Cardiff 029 2023 3838	Anne Robertson	Diocesan Schools Commissioner
Menevia 01239 612436	Paul White	Diocesan Schools Commissioner
Wrexham 01978 290344	Wendy White	Diocesan Schools Commissioner

Appendix E: CES Census 2025 Questions

The material below reflects the format of the Excel spreadsheet. The CES/SIMS software will generate the same data.

- A. Survey reference Date
 - 1. Date for data used
- B. School/College Characteristics
 - 2. Name of school/college
 - 3. Address 1
 - 4. Address 2
 - 5. Town
 - 6. Postcode
 - 7. Telephone number
 - 8. Contact name
 - 9. Contact email
 - a. School email address
 - b. Contact email address
 - 10. Website
 - 11. Head teacher/Principal
 - 12. Diocesan code
 - 13. Establishment number
 - 14. Local authority
 - 15. Unique reference number
 - 16. Governance
 - 17. Phase
 - 18. Gender of entry
 - 19. Gender of sixth form
 - 20. Name of trustees (if not diocesan)
- C. Teaching staff information
 - 21. Number (headcount) of male staff with NPQH qualification
 - a. Catholic
 - b. Other
 - 22. Number (headcount) of female staff with NPQH qualification
 - a. Catholic
 - b. Other
 - 23. Number (headcount) of male staff undertaking NPQH qualification
 - a. Catholic
 - b. Other
 - 24. Number (headcount) of female staff undertaking NPQH qualification
 - a. Catholic
 - b. Other
 - 25. Number of vacancies in leadership group by role
 - a. Executive Head Teacher
 - b. Head Teacher
 - c. Deputy Head Teacher
 - d. Assistant Head Teacher
 - 26. For each vacancy, please show duration in school terms.
 - 27. Acting head teacher Catholic?
 - 28. Ethnicity of head teacher
 - 29. Number of executive head teachers
 - 30. Number of head teachers
 - 31. Number of deputy head teachers

32. Number of assistant head teachers
- Total Teachers**
33. Total Catholic teachers (headcount)
34. Total other teachers (headcount)
35. Number of staff who have CCRS
- Teachers by ethnic group:**
36. White British
37. White Irish
38. White Other
39. Traveller of Irish/Gypsy/Roma heritage
40. Mixed/Dual background
41. Asian/Asian British
42. Black/Black British
43. Chinese
44. Other ethnic group
45. Not known
- RE Teaching in Schools and Colleges**
46. Number of specialist qualified RE teachers
47. Total number of staff who teach RE
48. Number of staff whose teaching timetable comprises at least 50% RE teaching
49. Any RE classes taken by teaching assistants
- D. Education Support Staff in Categories Listed in Guidance
50. Number (headcount) Catholic
51. Number (headcount) other
- E. Number and characteristics of Pupils on Roll
- 52 – 119 Numbers of Catholic boys and girls, non-Catholic boys and girls, from Nursery to Y14

Number of non-Catholic pupils on roll by religion

120. Christian – Other
121. Buddhist
122. Hindu
123. Jewish
124. Muslim
125. Sikh
126. Other
127. None
128. Refused
129. Missing
130. Number of pupils (if any) withdrawn from collective worship and / or RE.
131. School uniform
132. If yes, uniform provides for requirements of other religions (eg Sikh)
133. Number of pupils on roll who are in care/looked after
134. Number of pupils who are taking up FSM (free school meals)
135. Number of pupils with SEN without statement
136. Number of pupils with SEN with statement
137. Number of pupils (if any) withdrawn from SRE

Number of pupils on roll by ethnic group

138. White British
139. White Irish
140. White Other
141. Traveller of Irish/Gypsy/Roma heritage
142. Mixed/Dual Background

- 143. Asian/Asian British
 - 144. Black/Black British
 - 145. Chinese
 - 146. Other ethnic group
 - 147. Refused
 - 148. Not known
- F. Data Collection and Management Information
- 149. Management Information System (MIS) that your school/college uses

Appendix F - Adding Missing Catholic Lookups for the CES Census

The SIMS software categorises the religion of a pupil or member of staff according to the DCSF/WG statutory list. Some SIMS users, however, do not have the Catholic lookup. The following process will add the missing category and confirm that, if it is already present, it is properly set up.

Staff: Catholic Religion

Some schools already have lookups for Catholic staff.

- Follow the route [Tools | Lookups | Maintain](#).
- In Description, type *Religion* and in Data Area select *Staff*.
- Click Search, highlight the resulting “Religion – Staff – Yes” field and click *Open*.

If the school has a lookup value for *Catholic* or *Roman Catholic* staff (usually with a code like RC or ROC), it should be visible here and marked as Active; click Browse at the top of the screen and move to the next category ([Students: Catholic Religion](#), below). If the list does not have a Catholic category (often there is nothing or “Not Collected” in the Values box), click on *New* to the right of the list. An “Add/Edit Lookup Value” box will appear.

- In Code, enter *RC*.
- In Description, type *Catholic*.
- Make sure that the *Active* box is checked.
- Click *OK*, then click *Save*. You will be reminded to log out to allow the changes to take effect: click *OK*.

Students: Catholic Religion

Most schools will have a *Catholic* or *Roman Catholic* category (usually code RC or ROC) for their students.

The SIMS Autumn release will automatically ensure that a student Catholic religion code is created if one does not already exist. If for any reason this does not happen, follow these steps:

- Go to [Tools | Lookups | Maintain](#)
- In Description, type *Home Religion* and in Data Area select *Student*.
- Click Search, highlight the resulting “Home Religion – Student – Yes” field and click *Open*.

If the school has a lookup value for Catholic or Roman Catholic students, it will be visible here. Highlight it and click the *Open* button on the right.

- Confirm that the Category is set to *CH – Christian* and that the *Active* box is checked, and correct them if they are not. Click *OK*.

If the list does not have a Catholic category, click on *New* to the right of the list.

- In Code, enter *RC*.
- In Description, type *Catholic*.
- In Category, select *CH - Christian*.
- Make sure that the *Active* box is checked.
- Click *OK*.
- Click *Save*. You will be reminded to log out to allow the changes to take effect: click *OK*.

Once you have completed these steps, exit SIMS to allow the changes to take effect before re-opening SIMS and continuing.

Appendix G: Matching the CES Census Lookups

The CES Census derives a lot of information from SIMS data that has been entered into SIMS using lookup tables (drop down menus).

Some of the lookup table options must be matched to CES categories so that the data is extracted correctly.

The Lookup tables which need matching for the CES Census are:

For Staff:

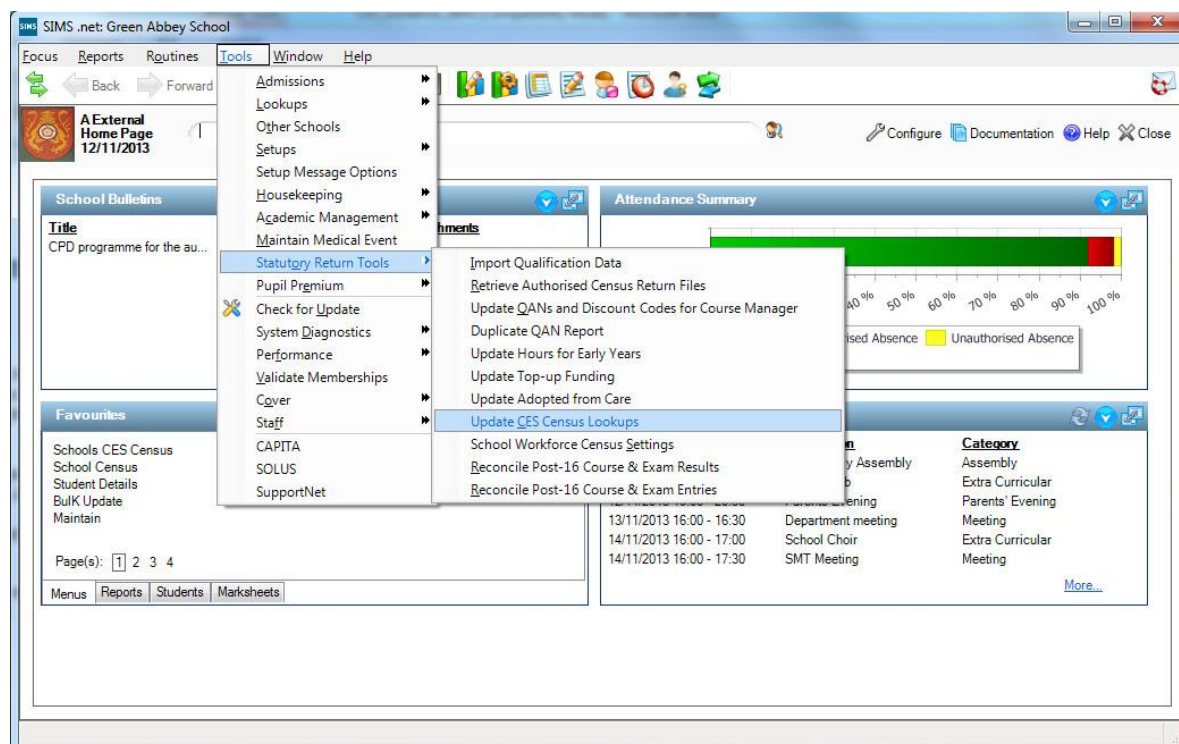
- Catholic Religion

For Pupils:

- Catholic Religion

The route to matching the lookup tables is:

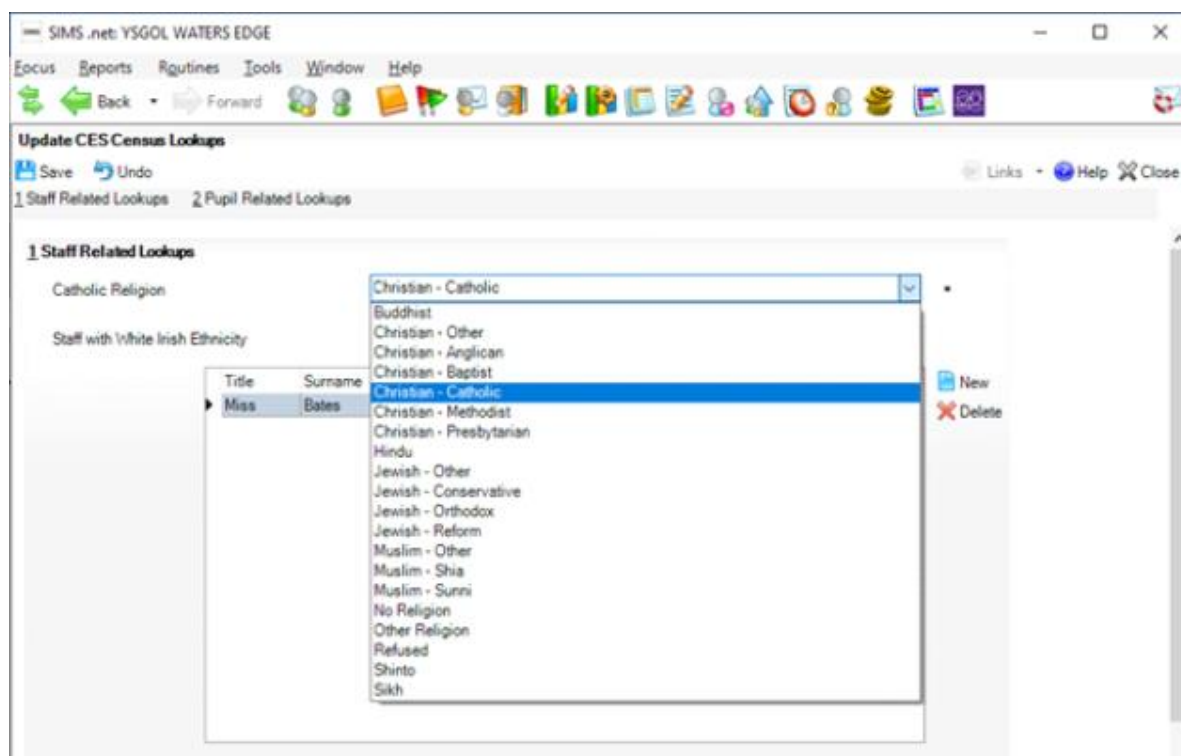
[Tools](#) | [Statutory Return Tools](#) | [Update CES Census Lookups](#)



To match Catholic to the look up tables, follow the route shown above; this will bring you to the screen shown below.

The SIMS lookups will appear in the drop down menu at the right hand side of each category for which they refer.

If you click the down arrow next to Catholic Religion a drop down box appears. Move your cursor to *Catholic* (or *Roman Catholic*) and click on this choice. This will place *Catholic* in the Catholic Religion box.



Continue this process for adding *Catholic Pupils*.

Click Save.

Appendix H – Bulk Updates of Pupil Data

Bulk update can be used to assign religion and ethnicity to multiple students.

Follow the route **Routines | Pupil (or Student) | Bulk Update**

The screenshot below shows the bulk update panel used for assigning religion to pupils. Note the options in the drop-down menus:

- Student population, Group Type: Home Religion
- Student population, Group: None
- Student population, Effective Date: a date **before** the Census date
- Update Data Item, Data Item: Home Religion
- Update Data Item, Effective Date: a date **before** the Census date

Bulk Update Student

Search

Bulk Update

Student Population

Group Type:

Group:

Effective Date:

Update Data Item

Data Item:

Effective Date:

Bulk Update Home Religion - Home Religion <NONE> (17/11/2010)

Save | Undo | Print

1 Members

Name	Year Group	Assigned	Anglican	Baptist	Buddhist	Catholic	Christian	Hindu	Jewish	Methodist	Muslim
Abbot, James	10	Catholic				✓					
Abbot, Susan	8	Catholic				✓					
Able, Benjamin	11	Anglican	✓								
Adair, Geoffrey	11	Catholic				✓					
Adams, James	12	Anglican	✓								
Adams, Kathryn	9	Catholic				✓					
Adams, Louise	11	Anglican	✓								
Adams, Melanie	7	Catholic				✓					
Addison, Avie	11	Catholic				✓					
Addison, Graham	11	Catholic				✓					
Adey, Marc	10	Anglican	✓								
Adkins, Richard	7	Catholic				✓					
Total	610	610	4	0	0	8	0	0	0	0	0

Click on the **search** icon. A list of all students with no religion assigned will be displayed. Assign the correct religion by clicking in the appropriate box next to their name. When all students have been updated, click on **Save**.

For detailed information on bulk update, please refer to the *Managing Pupil/Students in SIMS .net* handbook:

1. In SIMS, click on the **Documentation** icon at the top of the screen. The **SIMS Documentation Centre** panel will be displayed
2. Click on **Handbooks**
3. In the **Handbooks** panel, click on **Maintaining Pupil/Student Information**
4. Click on **Managing Pupil/Students in SIMS**
5. Scroll down to the section: Updating Pupil / Student Information in Bulk